



## **How to print to an OKI Printer from an Apple iPad**

Version 2.00 30/03/2012

## **Introduction**

This document describes how to print via the network from an Apple iPad to an OKI printer or MFP using third party applications.

As these applications are not OKI products, you should report any problems to the application vendor themselves and not to OKI. Oki cannot accept any responsibility for any problems caused by the use of these applications.

Other applications are available but have not been tested by OKI Systems UK.

## **Contents**

### **1.0 Using the iPad's native Print option**

#### **1.1 FingerPrint**

#### **1.2 AirPrint Activator**

### **2.0 Using iPad downloadable Apps to print**

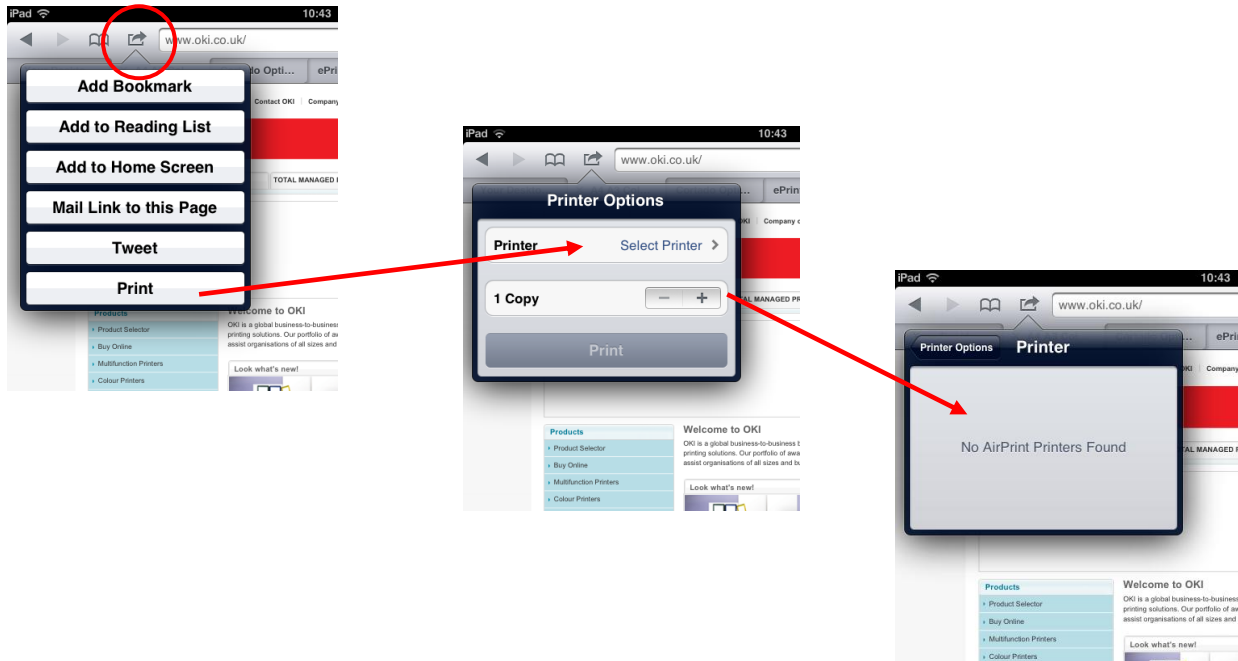
#### **2.1 ePrint by Microtech Corp**

#### **2.2 EuroSmartz**

#### **2.3 Cortado Workplace**

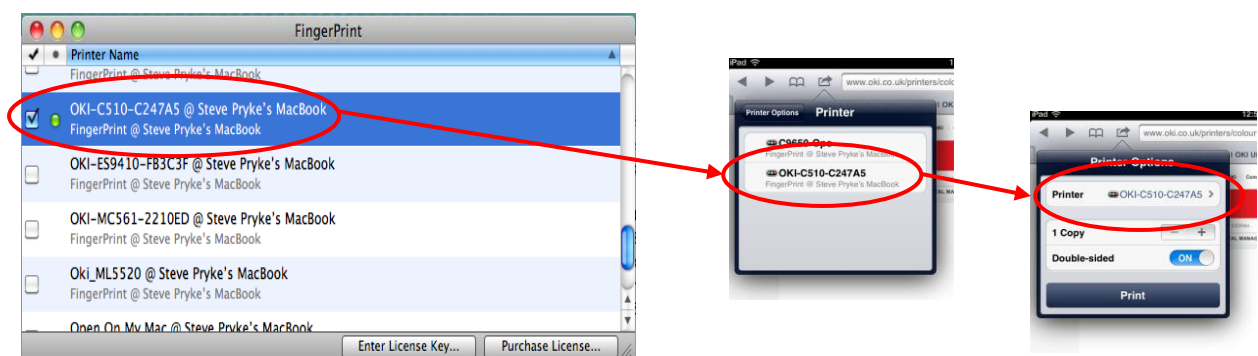
## 1.0 Using the iPad's native Print option

The native printing method in the iPad operating system, iOS, is as shown in the pictures below. To print directly from the iPad to the printer in this way requires a printer which supports AirPrint. AirPrint is not currently supported by OKI printers but this method of printing can be used by installing a third party software utility on a Mac or PC if one is running on the network. Examples of two such software utilities are detailed below.



## 1.1 FingerPrint

FingerPrint can be downloaded from <http://www.collobos.com/index.html>. There are PC and Mac versions of the software and trial versions are available. Simply install the software and then any GDI, PCL or Postscript printers already installed on the PC or Mac can be made available in the iPad Print option.



## 1.2 AirPrint Activator

AirPrint Activator is for Mac only and can be downloaded from <http://netputing.com/airprintactivator/airprint-activator-v2-0/>. Once installed on the Mac any shared printers will become available in the iPad Print option.

## **2.0 Using iPad downloadable Apps to print**

The rest of this document describes three apps which can be used to print. Which you choose depends on which printer you have and the features each app offers.

### **Microtech ePrint**

ePrint can be used if you have a PCL or Postscript printer which is connected to your network. If you have a Mac on your network then you can use a GDI printer using a shared driver from the Mac.

### **EuroSmartz**

If you have a GDI printer but no Mac on your network you can use EuroSmartz apps to print if you have a PC on your network.

### **Cortado Workplace**

If you have a PCL or Postscript printer which is connected to your network and you want cloud based storage then Cortado Workplace is a good solution.

## 2.1 ePrint by Microtech Corp

ePrint allows you to print web pages, photos, email attachments.

More information can be found at:

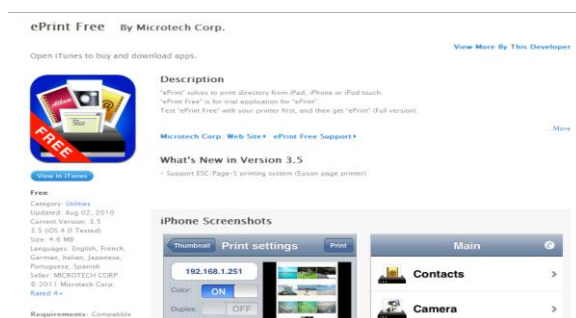
[http://www.e-workshop-dev.com/PC\\_EN/eprint\\_e.html](http://www.e-workshop-dev.com/PC_EN/eprint_e.html).



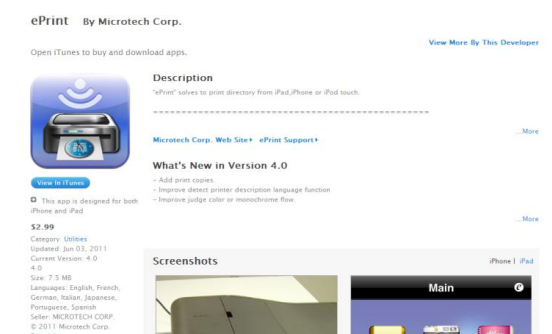
Free and paid versions of ePrint for iOS are available from the Apple Store. It's a good idea to try the free version first to make sure it works with your printer. Note that it has limited functionality and will only print the first page.

The two versions of ePrint can be downloaded from:

<http://itunes.apple.com/us/app/eprint-free/id304220730?mt=8>

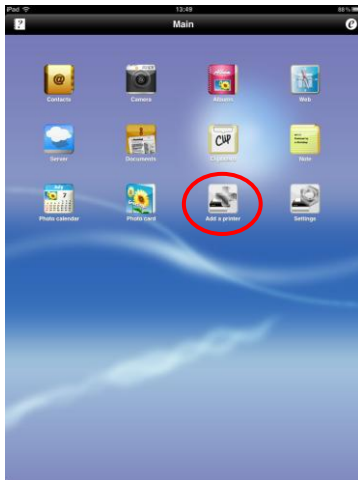


<http://itunes.apple.com/gb/app/eprint/id304221132?mt=8>

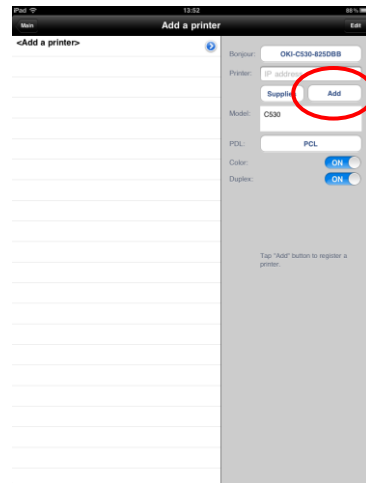


## 2.1.1 Adding a PCL or Postscript printer via Bonjour

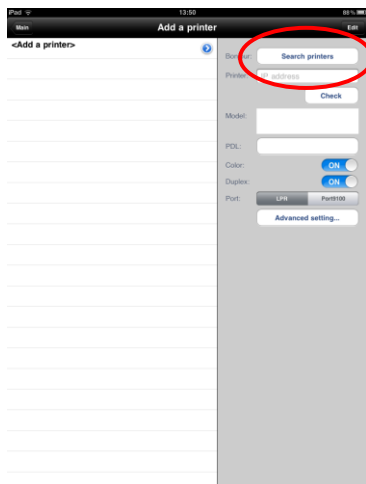
1. Go to the ePrint *Main* screen and then tap the *Add a printer* icon



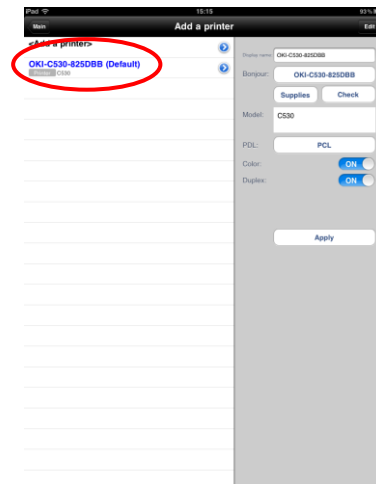
4. ..then tap *Add*



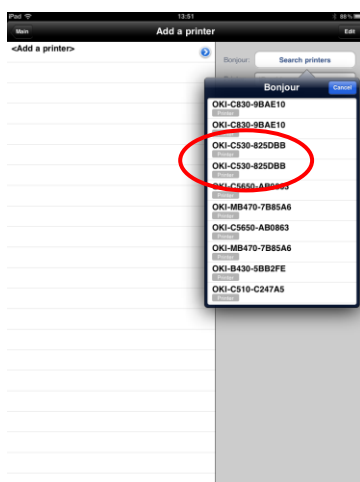
2. Tap Bonjour: *Search printers*



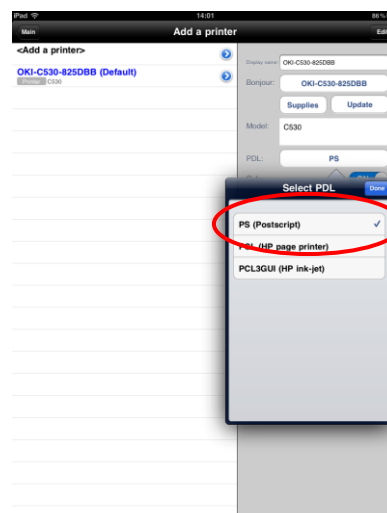
5. You have now added the printer



3. Select the printer you want to add...

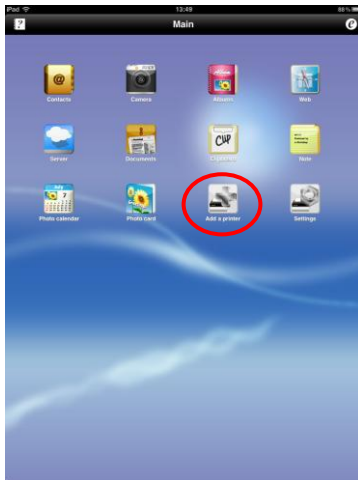


6. If your printer supports Postscript, you can optionally change the printer setting to use Postscript instead of PCL

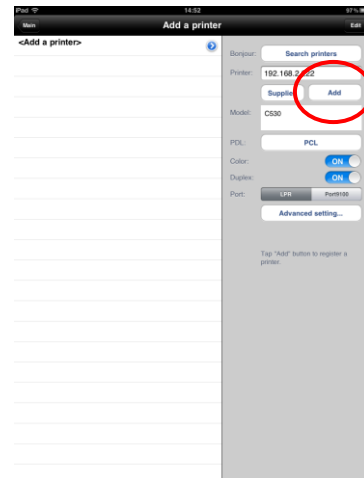


## 2.1.2 Adding a PCL or Postscript printer via an IP address

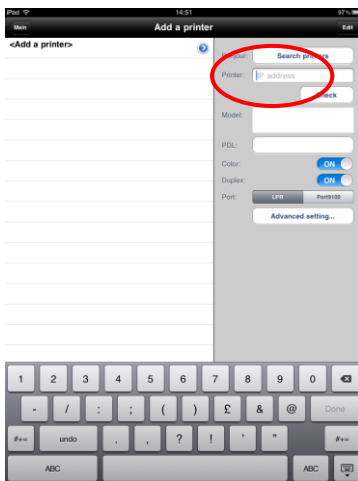
1. Go to the ePrint *Main* screen and then tap the *Add a printer* icon



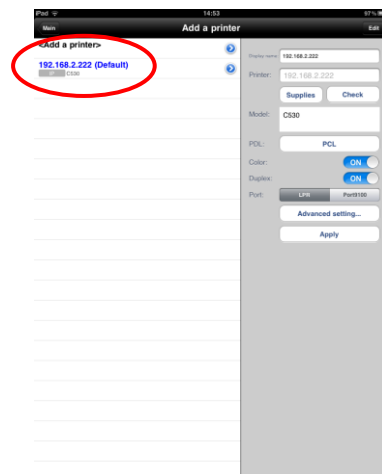
4. ..then tap *Add*



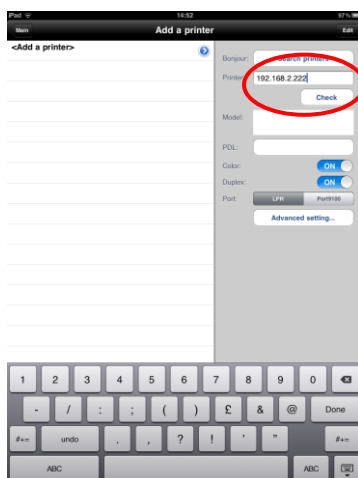
2. Tap Printer: *IP address*



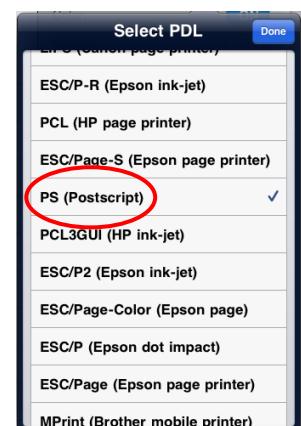
5. You have now added the printer



3. Type in the printer's IP address and tap *Check*

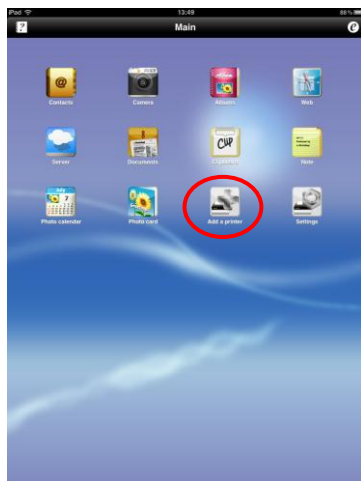


6: If you tap *Check* and then see the message below, tap *OK* then tap *PDL* to select *PCL* (HP page printer) or *PS* (Postscript), then tap *Add*

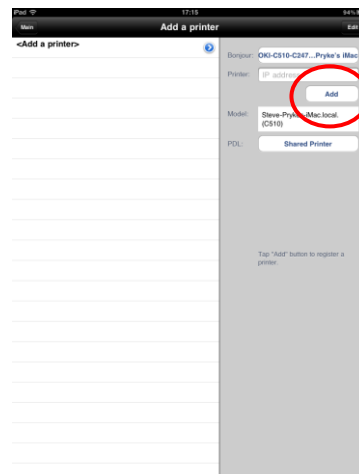


## 2.1.3 Adding a GDI printer using Mac printer sharing (OSX 10.4 or later)

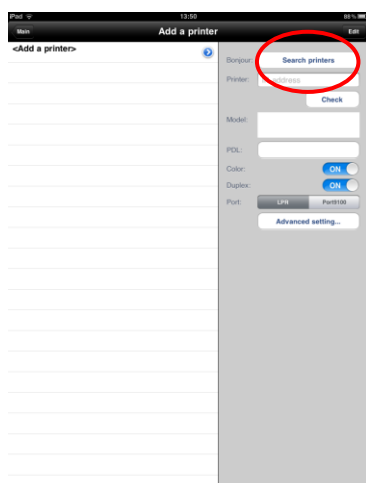
1. Go to the ePrint *Main* screen and then tap the *Add a printer* icon



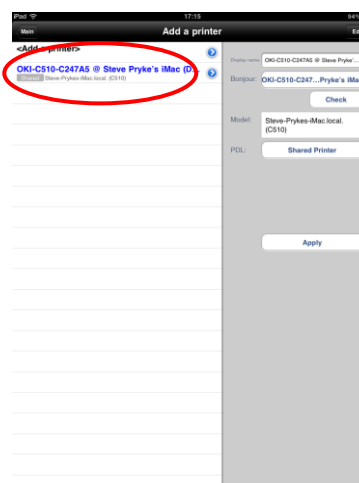
4. ..then tap *Add*



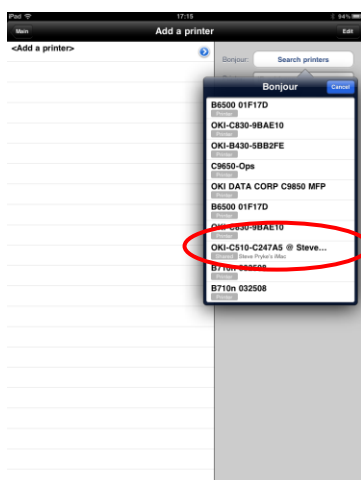
2. Tap Bonjour: *Search printers*



5. You have now added the shared printer



3. Select the *shared* printer you want to add...





## 2.2 EuroSmartz

EuroSmartz apps have different capabilities allowing you to print web pages, photos, emails etc. Choose the one which meets your requirements.

More information can be found at [www.eurosmartz.com](http://www.eurosmartz.com).



You can download the apps from:

<http://itunes.apple.com/app/pns/id426362921?ls=1>

### PrintCentral Pro By EuroSmartz Ltd

Open iTunes to buy and download apps.



[View In iTunes](#)

\$9.99

Category: [Productivity](#)

Updated: Jan 31, 2012

Version: 2.1.2

Size: 7.0 MB

Languages: English, Chinese.

#### Description

PrintCentral Pro is the essential printing app for the iPad. With PrintCentral Pro (AirPrint Printers). Print direct to most Wireless printers without additional software document type via your Mac/PC. Print remotely over 3G and in corporate or wh

[EuroSmartz Ltd Web Site](#) [PrintCentral Pro Support](#)

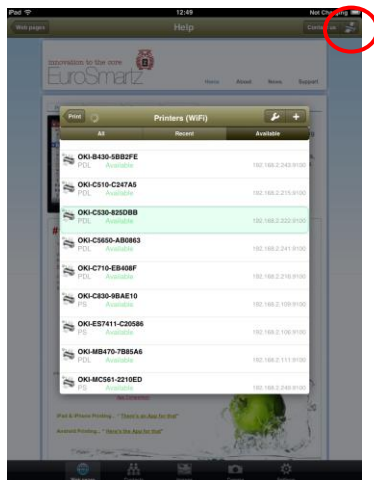
#### What's New in Version 2.1.2

Better browser compatibility • Improved detection of utf8 language strings

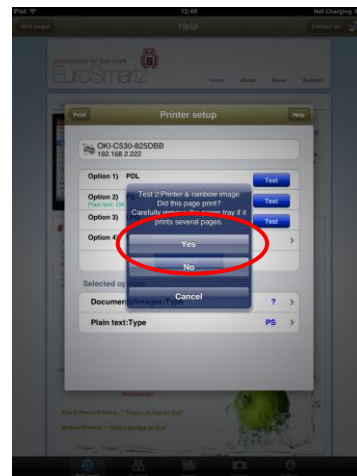
#### iPad Screenshots

## 2.2.1 Adding a Postscript printer

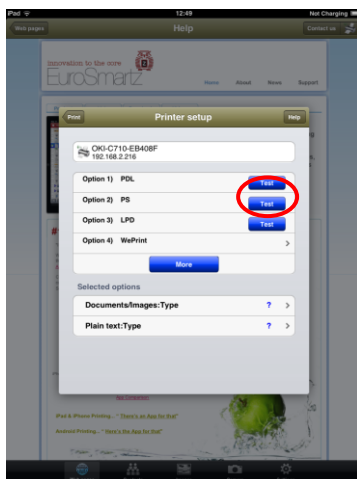
1. Go to the EuroSmaritz main screen and then tap the *printer* icon at the top right of the screen



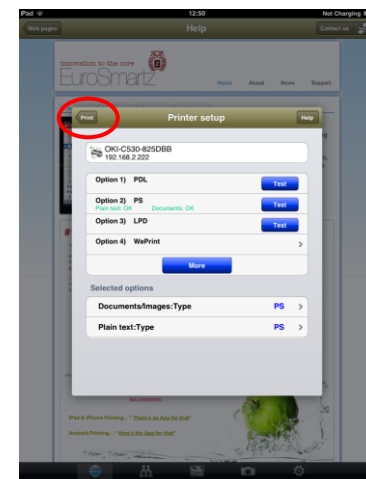
3. Wait for the second test page to print and then tap Yes



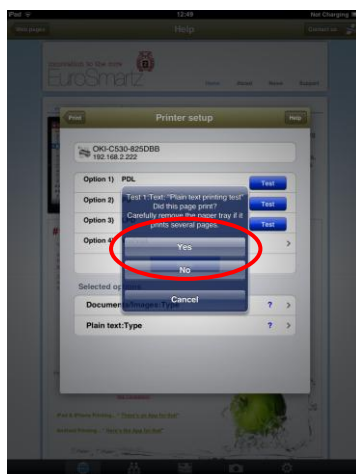
2. On the Printer Setup screen tap *Option 2) PS Test*



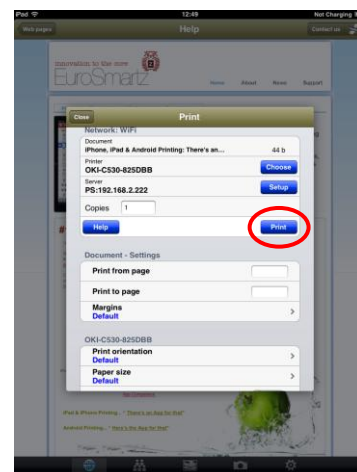
5. Now tap *Print*



3. Wait for the first test page to print and then tap Yes



6. The printer is now set up and you can tap *Print*

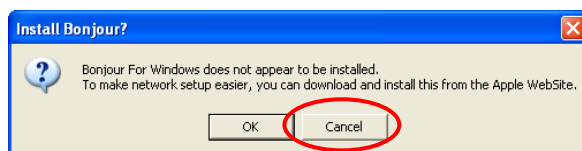


## 2.2.2 Adding a GDI printer connected to a PC

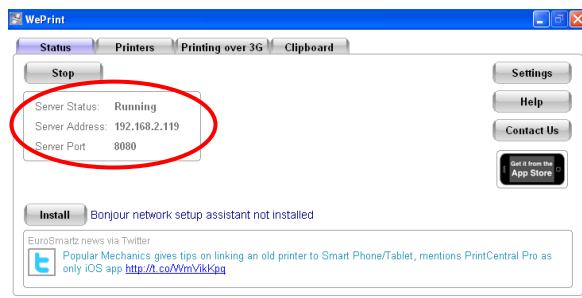
1. You first need to install *EuroSmarzt WePrint* on your PC. This can be downloaded from <http://mobile.eurosmartz.com/download.html>



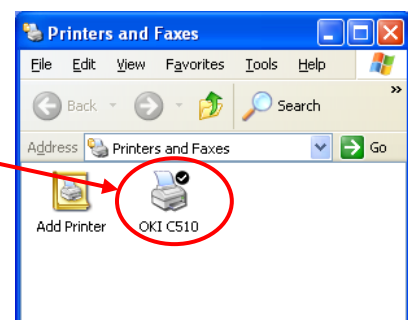
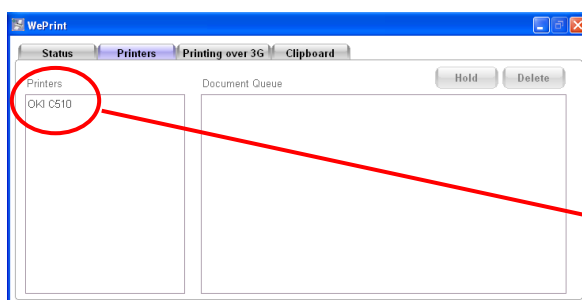
2. When installing *WePrint*, you will be prompted to install *Bonjour Print Services for Windows*. It is not essential to install this and you can click *Cancel* when you see the prompt. You can install it later if required



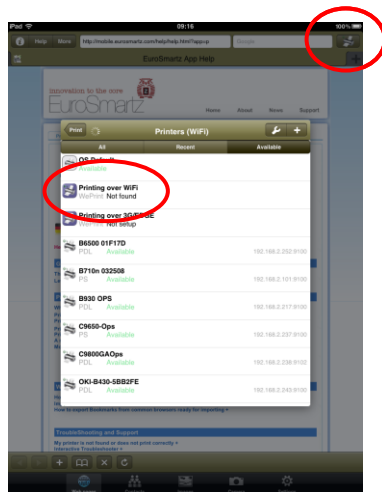
3. Once *EuroSmarzt WePrint* is installed on your PC you should see the following *WePrint* screen. Make a note of the *Server Address* because you will need to enter it on your iPad later on



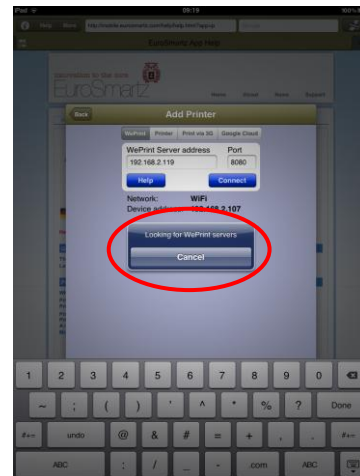
4. The *Printers* tab should show your GDI printer already installed on the PC



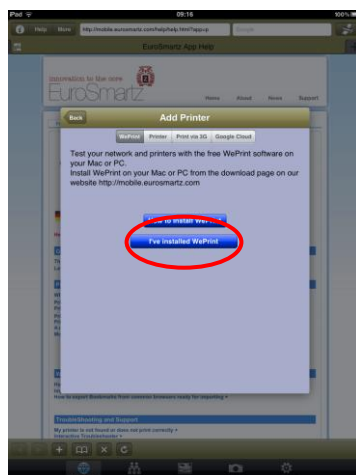
5. Now on the iPad, go to the EuroSmartz main screen and then tap the *printer* icon at the top right of the screen then from the list tap *Printing over WiFi*



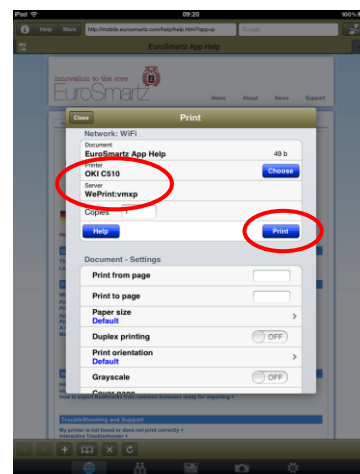
8. The iPad will now try to find your PC...



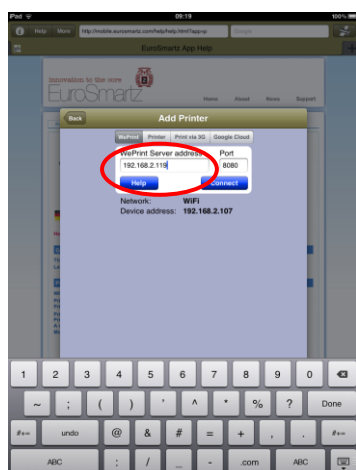
6. Then tap *I've installed WePrint*



9. ....and when it has it will display the driver on the PC and you are ready to print



7. Type in the *WePrint Server Address* that you made a note of from your PC and then tap *Connect*



## 2.3 Cortado Workplace

Cortado Workplace is a free cloud based app which can print but also provides 2GB of free online storage. It can also create and store PDFs from pictures and web pages.

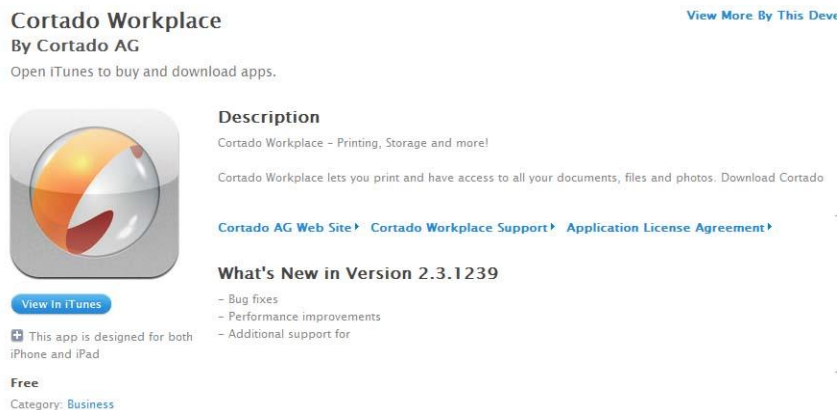
More information can be found at:

<http://www.cortado.com/euen/EN/Products/CortadoWorkplace/iPhoneiPad.aspx>



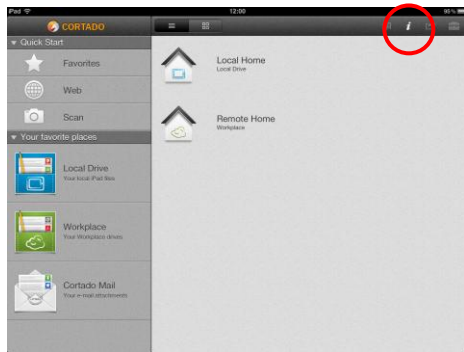
You can download Cortado Workplace from:

<http://itunes.apple.com/gb/app/cortado-workplace/id318124129?mt=8>

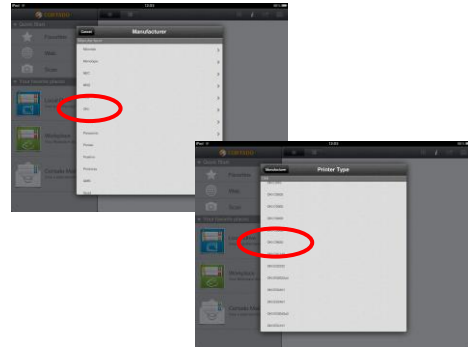


### 2.3.1 Adding a PCL or Postscript printer

1. Go to the Cortado main screen and then tap the *i* at the top right of the screen



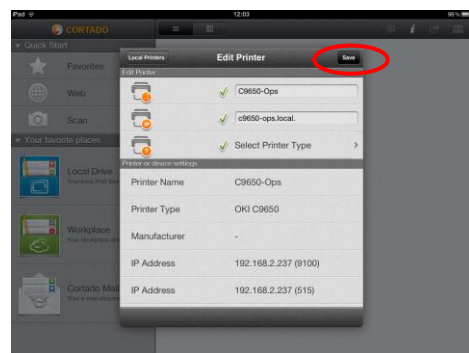
5. Scroll down and tap *OKI* then tap the correct Oki printer model



2. Tap *Print a Test Page*



6. Now tap *Save*



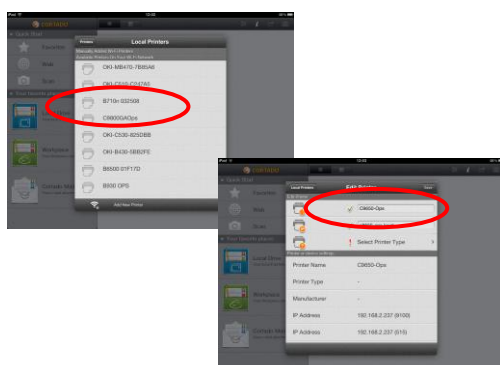
3. Tap *Manage Wi-Fi Printers*



7. The printer is now added



4. Tap the required printer and then tap *Select Printer Type* from the *Edit Printer* screen



8. To make sure the printer works, tap the printer name and then tap *Print* to print a test page

