

XEROX®

Technology | Document Management | Consulting Services



print | copy | scan | fax | email

# Advanced colour made easy



# Phaser® 6180

colour printer

# Phaser 6180MFP

colour multifunction printer



Xerox offers a choice of value-packed colour devices for your busy small-to-medium-size business, each designed to handle your office document demands with speed and precision:

The Phaser 6180 colour printer delivers fast printing, outstanding colour quality and unmatched ease-of-use. The Phaser 6180MFP colour multifunction printer adds to those strengths with advanced copying, scanning and faxing — all the tools you need to get more work done with optimal efficiency.

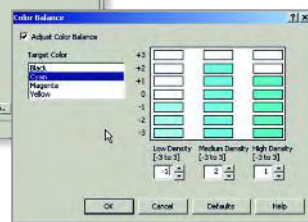
## Print to please

**Need to impress? For outstanding print quality, these devices perform beautifully.**

- 600 x 600 x 4 dpi resolution delivers an amazing 16 shades of colour per pixel — often perceived as higher print quality than many 2400 dpi devices.
- EA-HG toner technology — with particles engineered to have uniform size and shape — gives your printed images superior detail and clarity. It's the same high-quality toner used in our professional graphic-arts colour printers and multifunction systems.
- True Adobe® PostScript® 3™ print language ensures your jobs are printed accurately every time.
- PANTONE® Colour approved solid-colour simulations, Xerox colour correction technology and simple calibration tools automatically give you the right colour or let you fine-tune colours for special applications.



*With simple on-screen colour manipulation tools, the Phaser 6180 and 6180MFP make it easy to ensure that the colours you want are the colours you get.*



# print

# print copy scan fax email

## Phaser 6180



### Step up the pace

**The Phaser 6180 laser printer gets your jobs out quickly. Very quickly.**

- A print speed of up to 20 ppm in full colour brings your work to colourful life without slowing you down.
- Print black and white — even complex or large jobs — at up to a speedy 25 ppm thanks to a powerful 400 MHz processor and 128 MB of memory (expandable to 1,152 MB).
- A first-page-out time as quick as 10 seconds means your job's out faster than your trip to the printer.
- The 60,000-page-per-month duty cycle easily handles a steady flow of office document demands.
- Multiple connectivity options — Ethernet, USB, parallel and optional wireless — give you the power and flexibility to support your diverse workgroup.

## Phaser 6180MFP

### Go full speed

**Robust multifunction performance that easily keeps up with the busy pace of your entire office.**

- One space-saving device does the work of four standalone machines, combining powerful printing, copying, scanning and faxing.
- Fast colour at up to 20 ppm lets your entire workgroup enjoy the benefits of colour without slowing down.
- Black and white prints at up to a quick 30 ppm regardless of your job's size or complexity, thanks to a 400 MHz processor and 384 MB of memory (expandable to 1,408 MB).
- A scan speed of up to 7 colour or 20 black and white scans per minute lets you quickly go from paper to digital.
- Walk-up fax with LAN fax delivers up to 400 x 400 dpi resolution, and includes JBIG compression technology for faster transmissions.



*One-button copying makes walkup use quick and easy. No need navigating a menu just to make a copy.*

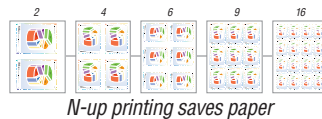
*Intuitive control panel makes copy, fax, email and scan functions easy to use, and also displays job status and toner levels.*



## Work hard, print (and copy, scan, fax and email) easy

From installation to everyday operation, these devices provide a wealth of features to make office life easier.

- Complete installation takes only minutes, thanks to the advanced Phaser Installer software.
- Check print job status, manage your fax address book (6180MFP) and get quick access to online support right from your desktop with CentreWare® IS internal web server.
- Professional layout functions like N-up, Posters, Booklet and ID Card Copy (6180MFP) increase your document options.
- Built-in support for Apple Bonjour™ (standard) and included Mac drivers will please mixed PC/Mac environments.
- Instant pop-up messages appear on your monitor if print issues arise, thanks to PrintingScout® alerts.
- Super-quiet operation makes the Phaser 6180 printer/Phaser 6180MFP office-friendly.



## Fits your office

- 1 The standard 150-sheet **Tray 1** (MPT) supports a wide range of custom media and sizes.
- 2 The standard 250-sheet **Tray 2** reliably feeds weights up to 220 gsm and custom sizes.
- 3 An optional 550-sheet **Tray 3** boosts total paper capacity to 950 sheets.
- 4 The **Automatic Document Feeder** (6180MFP) allows scanning and faxing of multiple-page documents up to 50 sheets.
- 5 Money-saving and fast **automatic duplex** option for two-sided printing (standard on D and DN configurations).
- 6 Standard **348 MB memory** (expandable to 1,408 MB) for 6180MFP and **128 MB** (expandable to 1,152 MB) for 6180 speeds up all functions.
- 7 Convenient front door provides **easy access** to the simple-to-replace print cartridges. Choose the high-capacity cartridges for cost savings and nonstop printing. Standard-capacity cartridges are available if printing loads are lighter.



## Powerful scanning solutions

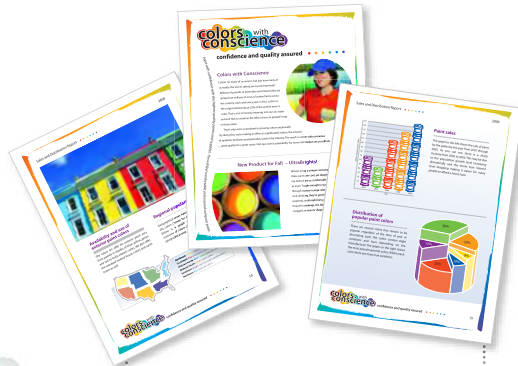
The Phaser 6180MFP converts your paper documents into ultraportable digital files for efficient sharing, organising and archiving.

- *Express Scan Manager* (standard) lets you easily set up default parameters — like image type, scan resolution, paper size and output destination — for faster, simplified scanning.
- Choose from flexible document-routing options like *Scan to Email* (SMTP), *Scan to Server* (FTP) and *Scan to Computer* (using SMB network protocol).
- Download email addresses directly to the device-based *Address Book Editor* for easy front-panel access when sending scans.
- Save your scans as industry-standard PDF, JPEG or TIFF file formats.
- Manage documents and convert scanned images into editable text using *Scan to PC Desktop*® software (optional).



Phaser 6180

Phaser 6180MFP



**What do both products have in common?**

Outstanding laser colour quality featuring Xerox-exclusive EA-HG toner technology, which gives your printed images superior detail and clarity.



# Colourful, easy to use and packed with value

**COLOUR**

**The impact of colour**  
Colour attracts, clarifies, and sells. It is one of the most effective business tools available.

**VALUE**

**High-end colour tools, low-end price**  
Even businesses on a tight budget can enjoy exceptional colour quality.

**TEAM PLAYER**

**Designed to fit any office**  
These devices easily connect to your network and fit perfectly in workgroups with both PC and Mac users.



	Phaser 6180N	Phaser 6180DN	Phaser 6180MFP/N	Phaser 6180MFP/D
<b>Speed</b>	20 ppm colour / 25 ppm black and white		20 ppm colour / 30 ppm black and white	
<b>Duty Cycle</b>	60,000 pages / month <sup>1</sup>			
<b>Paper Handling</b>				
Paper input	Standard	Tray 1 (MPT): 150 sheets; Custom sizes: 76.2 x 127 mm to 220 x 355.6 mm Tray 2: 250 sheets; Custom sizes: 148 x 210 mm to 220 x 355.6 mm		
	Optional	Tray 3: 550 sheets; Custom sizes: 148 x 210 mm to 220 x 355.6 mm		
Document handler	NA		Automatic Document Feeder: 50 sheets; Custom sizes: 148 x 210 mm to 220 x 355.6 mm	
Paper output	300 sheets			
Two-sided output	Optional	Standard	Optional	Standard
<b>Copy</b>	NA		Up to 7 cpm colour / 20 cpm black and white	
Copy speed	NA		As fast as 20 seconds colour / 11 seconds black and white	
First-page-out time	NA		As fast as 20 seconds colour / 11 seconds black and white	
Resolution (max)	NA		600 x 600 dpi	
Copy features	NA		Collation, Reduce/Enlarge, ID Card Copy, Poster	
<b>Print</b>	As fast as 10 seconds colour			
First-page-out time	As fast as 10 seconds colour			
Resolution (max)	600 x 600 x 4 dpi			
Processor	400 MHz			
Memory (std / max)	128 MB / 1,152 MB		384 MB / 1,408 MB	
Connectivity	10/100Base-TX Ethernet, USB 2.0, Parallel, Optional: multiprotocol network card, wireless network adapter			
Page Description Language	PCL® 6 emulation, Adobe® PostScript® 3™			
Print features	Booklet printing <sup>2</sup> , Covers <sup>2</sup> , Separators, Transparency separators, N-up, Watermarks <sup>2</sup> , Poster printing <sup>2</sup> , Banner sheets <sup>2</sup> , Fit to page		Watermarks/Overlays, Poster, Booklet, N-up, Covers/Separators, Banner, Skip blank pages, Proof Print, Secure Print, RAM collation	
	Additional <sup>3</sup>	Secure Print, Proof Print, RAM collation		NA
<b>Scan</b>	NA		Scan to Computer Application (USB), Scan to Server (FTP), Scan to Computer (using SMB), Scan to Email	
Scan destinations	NA		Scan to Computer Application (USB), Scan to Server (FTP), Scan to Computer (using SMB), Scan to Email	
Scan features	NA		JPEG, TIFF, PDF, Colour Scanning, Xerox Scan to PC® software (optional)	
<b>Fax</b>	NA		Walk-up fax (33.6 Kbps with MMR/MR/MH, JBIG, JPEG compression), LAN fax Junk fax barrier, Memory fax, Secure receive, Delay fax, Colour fax, Speed dials, Group dials	
Fax features	NA		Walk-up fax (33.6 Kbps with MMR/MR/MH, JBIG, JPEG compression), LAN fax Junk fax barrier, Memory fax, Secure receive, Delay fax, Colour fax, Speed dials, Group dials	
<b>Warranty</b>	One-year on-site warranty		One-year on-site warranty <sup>4</sup>	

<sup>1</sup>Print Volume uniformly distributed over 30 days <sup>2</sup>Accessed via PCL driver <sup>3</sup>Requires minimum 256 MB RAM <sup>4</sup>Products purchased under a "PagePack" agreement do not carry a warranty. Please refer to your service agreement for full details of your enhanced service package.

#### Device Management

CentreWare® IS Embedded Web Server, CentreWare Web, PrintingScout™

#### Print Drivers

Windows® 2000/ 2003 Server/XP/XP Home Edition (SP1 or higher)/Vista, Mac OS® X version 10.2 or higher, Solaris 8, 9, 10, HPUX 11.0, AIX 4.3.3, Turbolinux 10 Desktop, RedHat Enterprise Linux ES (version 3, 4), SuSe Linux 9.2, 9.3 Professional, Fedora Core 1, YellowDog 3.x

#### Font Support

PostScript® fonts: 136; PCL® fonts: 81

#### Media Handling

All trays: 65 – 220 gsm;  
Two-sided output: 65 – 163 gsm  
Automatic Document Feeder:  
65 – 120 gsm  
Media types: Plain paper, envelopes, labels, transparencies, card stock, glossy coated

#### Colour Standards

PANTONE® Colour approved solid-colour Simulations, Colour Correction, ICC Profile

#### Operating Environment

Temperature:  
Storage: 0° to 35° C  
Operating: 10° to 32° C  
Relative humidity: 15 – 80%  
6180:  
Sound pressure levels: Operating: 49.1 dBA, Standby: 28.6 dBA  
Sound power levels: Operating: 6.62B, Standby: 4.0B  
6180MFP:  
Sound pressure levels: Operating: 51.6 dBA, Standby: 26.8 dBA  
Sound power levels: Operating: 6.59B, Standby: 4.18B

#### Electrical

Power: 220–240 VAC, 50/60 Hz.  
6180:  
Power consumption:

Standby: 68.9 W  
Printing: 410 W, Power save: 6.3 W  
ENERGY STAR® qualified  
6180MFP:  
Power consumption:  
Standby: 90 W, Printing: 500 W, Power Save: 17 W  
ENERGY STAR® qualified

#### Dimensions (WxDxH)

6180:  
400 x 493 x 470 mm;  
Weight: 6180N: 27.2 kg,  
6180DN: 28.3 kg  
6180MFP:  
460 x 520 x 730 mm;  
Weight: 6180MFP/N: 40 kg,  
6180MFP/D: 41 kg

#### Certifications

FCC Part 15, Class B, FCC Part 68, Listed UL 60950-1/CSA 60950-1-03, CE Mark applicable to Directives 73/23/EEC, 89/336/EEC, and 1999/5/EC, RoHS Directive 2002/95/EC, WEEE Directive 2002/96/EC

#### Supplies

Standard-capacity print cartridge:\*  
Black: 3,000 pages 113R00722  
Cyan: 2,000 pages 113R00719  
Magenta: 2,000 pages 113R00720  
Yellow: 2,000 pages 113R00721  
High-capacity print cartridge:\*  
Black: 8,000 pages 113R00726  
Cyan: 6,000 pages 113R00723  
Magenta: 6,000 pages 113R00724  
Yellow: 6,000 pages 113R00725

#### Options

550-sheet feeder-  
Phaser 6180MFP 097S03833  
Phaser 6180 097S03744  
256 MB Phaser Memory 097S03743  
512 MB Phaser Memory 097S03635  
Automatic two-sided printing unit 097S03746  
Scan to PC Desktop-  
Professional Small Business Edition 097S03735  
SE Small Business Edition 097S03739  
Multi-Protocol Network Card -  
Phaser 6180MFP 097S03745\*\*  
Phaser 6180 097S03773  
Wireless Network Adapter -  
European power converter 097S03741  
UK power converter 097S03742

\*Average standard pages. Declared Yield in accordance with ISO/IEC 19798. Yield will vary based on image, area coverage and print mode.

\*\* Available December 2007



**Call today.** For more information, call  
**00 800 9000 9090** or visit us at  
**www.xerox.com/office**

Copyright © 2007 XEROX CORPORATION. All rights reserved. Contents of this publication may not be reproduced in any form without permission of XEROX CORPORATION. XEROX®, Phaser®, CentreWare® and Scan to PC Desktop® are trademarks of XEROX CORPORATION in the U.S. and/or other countries. All other trademarks are the property of their respective manufacturers. PANTONE Colours generated may not match PANTONE-identified standards. Consult current PANTONE publications for accurate colour. PANTONE®, and other Pantone, Inc. trademarks are the property of Pantone, Inc. As an Energy Star partner, Xerox Corporation has determined that this product meets the Energy Star guidelines for energy efficiency. Energy Star and the Energy Star mark are registered U.S. marks. The information in this brochure is subject to change without notice. 9/07