

SAMSUNG

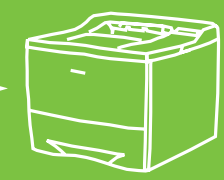
SAMSUNG



DigitAll wireless
SAMSUNG

		ML-2550	ML-2551N	ML-2552W	
PRINT	Speed(A4)	24 ppm	24 ppm	24 ppm	
	Resolution	1200 dpi	1200 dpi	1200 dpi	
	Processor	Samsung 266 MHz	Samsung 266 MHz	Samsung 266 MHz	
	RAM (Std)	32 MB	32 MB	32 MB	
	RAM (Max)	160 MB	160 MB	160 MB	
	Monthly Duty Cycle	150,000 Pages	150,000 Pages	150,000 Pages	
	Emulation		PCL6, PostScript3, IBM ProPrinter, Epson	PCL6, PostScript3, IBM ProPrinter, Epson	PCL6, PostScript3, IBM ProPrinter, Epson
		Resident Fonts	45 Scalable, 1 Bitmap, 136 PS 3 Fonts	45 Scalable, 1 Bitmap, 136 PS 3 Fonts	45 Scalable, 1 Bitmap, 136 PS 3 Fonts
		Standard Interface	IEEE1284 Parallel, USB 2.0	IEEE1284 Parallel, USB 2.0, 10/100 Base TX	IEEE1284 Parallel, USB 2.0, 10/100 Base TX+ 802.11b Wireless LAN
	Optional Interface		10/100 Base TX, 10/100 Base TX + 802.11b Wireless LAN	10/100 Base TX + 802.11b Wireless LAN	-
PAPER HANDLING	Paper Input	500-sheet Cassette	500-sheet Cassette	500-sheet Cassette	
		100-sheet Multi-purpose Feeder	100-sheet Multi-purpose Feeder	100-sheet Multi-purpose Feeder	
	Optional Paper Input	500-sheet Cassette	500-sheet Cassette	500-sheet Cassette	
	Paper Output	250 Sheets Face Down, 100 Sheets Face Up	250 Sheets Face Down, 100 Sheets Face Up	250 Sheets Face Down, 100 Sheets Face Up	
		Paper Sizes	Letter, Legal, Folio, Executive, Monarch, COM10, C5, DL, A4, A5, B5, 3" x 5"	Letter, Legal, Folio, Executive, Monarch, COM10, C5, DL, A4, A5, B5, 3" x 5"	Letter, Legal, Folio, Executive, Monarch, COM10, C5, DL, A4, A5, B5, 3" x 5"
	Special Media	Transparency, Labels, Post Card, Envelope	Transparency, Labels, Post Card, Envelope	Transparency, Labels, Post Card, Envelope	
		OS	Compatibility	Win 9x, NT 4.0, Me, 2000, XP; Linux, Mac OS 8.6 or higher, SUN Solaris, HP-UX, SCO Unix	Win 9x, NT 4.0, Me, 2000, XP; Linux, Mac OS 8.6 or higher, SUN Solaris, HP-UX, SCO Unix
GENERAL	Dimensions (WxDxH)	386 x 436 x 326 mm	386 x 436 x 326 mm	386 x 436 x 326 mm	
	Weight	13.5 kg (29.8 lbs.)	13.5 kg (29.8 lbs.)	13.5 kg (29.8 lbs.)	
CONSUMABLES	Type	Single Cartridge	Single Cartridge	Single Cartridge	
	Yield	10,000 Sheets	10,000 Sheets	10,000 Sheets	
		@ IDC 5% Coverage (Starter 5,000 Sheets)	@ IDC 5% Coverage (Starter 5,000 Sheets)	@ IDC 5% Coverage (Starter 5,000 Sheets)	

Wireless enabled



One-touch duplex printing

Distributed by

SAMSUNG ELECTRONICS Co.,LTD.
Samsung Main Bldg. 250, 2-ka, Taepyeong-Ro,
Chung-Ku, Seoul, Korea 100-742
Tel:82-2-751-2114 Fax:82-2-751-2923
<http://www.samsungprinter.com>

SAMSUNG DIGITall
everyone's invited™

www.samsungprinter.com

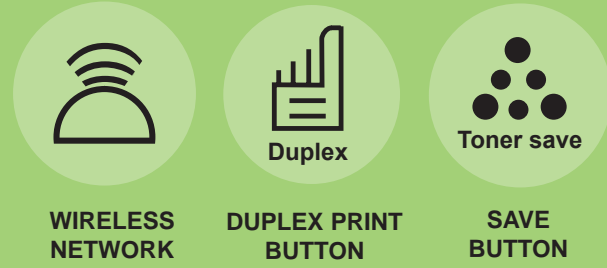
The new wireless enabled printers
ML-2550, ML-2551N and ML-2552W

SAMSUNG DIGITall
everyone's invited™

www.samsungprinter.com

Design and Specifications are subject to change without notice. Trademarks of other companies mentioned in these publications are hereby recognized and acknowledged.

Unplug in style with the new wireless enabled printer range from Samsung. Featuring high performance with the latest cost saving features, the ML-2550, ML-2551N and ML-2552W models offer an ideal solution for your workgroup printing needs.



WIRELESS NETWORK

DUPLEX PRINT BUTTON

SAVE BUTTON

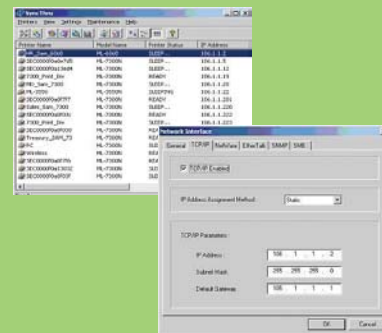
Outstanding Performance

The enhanced capabilities of the ML-2550, ML-2551N and ML-2552W give you the advanced digital performance to upgrade your business.

- Wireless LAN (802.11b) printing : Find another use for all those old printer cables, because now you won't need them any more.
- Ultra-fast interface : the standard USB 2.0 port means you can say goodbye to all those annoying bottlenecks between PC and printer.
- Print speed (A4) : With high-speed 266 MHz CPU and 32MB (up to 160MB) memory, your volume tasks are ready in no time, at 24 pages per minute.
- Resolution : crisp image reproduction with 1200 dpi resolution.
- Large paper & toner capacity : Maximum 1,100-sheet paper cassette (with an optional 500 sheet 2nd cassette) and immense 10,000-sheet toner cartridge let you free from frequent troublesome work.

Solid Network Solution

- Wireless Network : Networkable via an Ethernet 10/100 Base TX network adapter or a combination of 10/100 Base TX and 802.11b wireless NIC, either as options or standard configuration.
- SyncThru : Samsung's remote printer management software tool that enables you to install, control and manage Samsung network printers on your network, included as standard.



Economical Features

Our printers are not only competitively priced, they also have built-in features to save you even more money over time.

- Toner save button : allows you to save up to 40 % of your toner so you can replace your cartridges less frequently and save money while still producing high quality prints.
- Paper saving : lets you create reduced sized copies (2-up, 4-up, maximum 16-up) on one page. (Paper saving via duplex printing is also available.)

Advanced Digital Capability

The Samsung ML-2550, ML2551N and ML-2552W printers are packed with technological innovations designed to save you time and paper, add extra convenience and increase your business productivity.

- One-touch duplex printing : this convenient feature lets you create double-sided print-outs at the touch of a button. (Duplex printing via driver setting is also available.)

Maximum Compatibility

- Various OS System Support : ML-2550, ML-2551N and ML-2552W are compatible with a wide range of operating systems including Windows, Linux and Macintosh, as well as SUN Solaris, HP-UX and SCO Unix.

Fast print speed (A4) :
24 pages/minute

802.11b

WIRELESS NETWORK

Network solution : wireless LAN (ML-2552W) and 10/100 base TX

LCD

Easy operation : large, clear LCD display (2 x 16 characters)

DUPLEX PRINT BUTTON



Easy duplex printing: one-touch duplex print button



Memory :
32 MB (expandable to 160 MB)

Dual Interface :
ultra fast USB 2.0 and IEEE1284 dual ports.



SAVE BUTTON

Cost saving : one-touch 40% toner saving



Paper Capacity :
500-sheet cassette + 100-sheet multi-purpose tray
500-sheet 2nd cassette option

The ML-2550, ML-2551N and ML-2552W wireless enabled printers are the better way to manage your network printing needs, without all those annoying cables. We call that **DigitAll wireless** from Samsung.

SAMSUNG DIGITall
everyone's invited™

www.samsungprinter.com