

Bring photos
to life



SELPHY

With a SELPHY Compact Photo Printer you can turn photos captured from a range of devices into beautiful, long-lasting prints in seconds – plus experiment with creative effects, layouts and printing formats.

100
YEARS
PRINT

Dye-Sub



ID Layout

Wi-Fi connectivity

The SELPHY CP900 includes Wi-Fi support for ultra convenient wireless photo printing from smartphones, tablets and PCs as well as WLAN PictBridge compatible cameras such as the PowerShot S110. It can easily print from home Wi-Fi networks or alternatively connect directly to iOS devices and compatible cameras, without an access point – so you can print your photos anywhere.

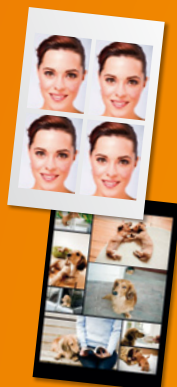
From pixel to print

It's easy to share your pictures with SELPHY, thanks to Canon's intelligent technologies and user-friendly design.

Dye-sublimation technology ensures lab-quality prints that will last up to 100 years stored in an album. A special protective coating ensures every print is completely dry and resistant to water, fingerprints and scratches.

SELPHY lets you produce prints of different sizes, combine multiple photos on a single page with Layout Print or create beautiful collage prints with colour effects using Shuffle Layout. Auto Image Optimize can automatically improve print quality, while ID Photo Print creates ID photos in widely accepted sizes.

ID Photo
Print



Shuffle
Layout

SELPHY
Photo Print
software

The supplied SELPHY Photo Print software lets you easily create your own calendar, choose decorative frames, or add clip art and speech bubbles to your prints with Creative Print mode.



Wireless photo printing made easy

SELPHY CP900



With Wi-Fi for quick and easy printing from smartphones, tablets and other wireless devices, the ultra-compact SELPHY CP900 delivers beautiful long-lasting, lab quality prints in under 1 minute.

Wi-Fi Printing

Simple, portable lab-quality printer with Wi-Fi for printing photos from wireless devices like smartphones.



New square stickers

Key features

Ultra-compact and portable photo printer – perfect for printing anywhere

Wi-Fi for easy printing from smartphones, tablets, PCs and compatible cameras

Fast, lab-quality, durable prints in under 1 minute for long lasting memories

6.8 cm (2.7") tilting LCD for easy operation and viewing

Print directly from memory cards, digital cameras or USB sticks

Range of print sizes and layouts to suit every project

Auto Image Optimize with Scene and Face Detection corrects images for superb results

ID Photo Print with face-frame guide creates ID photos in widely accepted sizes

Optional battery lets you print on the move

SELPHY Photo Print software



Keep your SELPHY busy!

Canon is dedicated to providing you with many different ways to share your memories. From Postcard prints to square stickers that are perfect for printing from mobile devices, there's a solution for everyone.



Borderless Postcard Print

ID Photo Print

Mini Stickers

Ink & Paper Sets For use with SELPHY CP series



KP-108IN
Ink Paper Set
Postcard Size
(108 sheets)



KP-361P
Ink Paper Set
Postcard Size
(36 sheets)



KC-181S
Ink Paper Set
Square Size
Stickers
(18 sheets)



KC-361P
Ink Paper Set
Credit Card
Size
(36 sheets)



KC-181L
Ink Paper Set
Mini Stickers
(18 sheets)



KC-181F
Ink Paper Set
Credit Card Size
Stickers
(18 sheets)

Quick Specifications



	SELPHY CP900	SELPHY CP810
Print Method	Dye-sublimation thermal transfer	
Print Speed	Postcard size: approx. 47 sec	
LCD Monitor	6.8 cm (2.7") Colour TFT with tilt mechanism	
Print Sizes	Postcard (148 x 100 mm) Credit Card (86 x 54 mm) ⁽¹⁾ Credit Card Sticker (86 x 54 mm) ⁽¹⁾ Mini Stickers (22 x 17.8 mm each) ⁽¹⁾ Square Stickers (50 x 50 mm) ⁽¹⁾	
Print Modes	Easy print (Selection of individual images and number of copies for batch printing), All image print (Selection of all images and number of copies for batch printing), DPOF Image Print, ID Photo Print (Multi-size, Standard, Custom size)	
Print Settings	Red-Eye Correction, Bordered, Borderless, Layout (1-up, 2-up, 4-up, 8-up, Index, Shuffle), Smooth Skin, My Colors (Off, Vivid, Neutral, Positive Film, Sepia, Black & White), Date, Image optimize, Manual brightness adjustment	
Direct Printing From a Camera	Yes from PictBridge (USB, WLAN) compatible cameras	
Direct Printing from a Memory Card	Supported card types: SD, SDHC, SDXC, MMC, MMCplus, HC MMCplus Supported via optional Adapter: miniSD, miniSDHC, microSD, microSDHC, microSDXC, RS-MMC, MMCmobile, MMCmicro	Yes from PictBridge (USB) compatible cameras Supported card types: SD, SDHC, SDXC, Compact Flash, MMC, MMCplus, HC MMCplus, Microdrive Supported via optional Adapter: miniSD, miniSDHC, microSD, microSDHC, microSDXC, RS-MMC, MMCmobile, MMCmicro, xD-Picture Card
Direct Printing from USB Flash memory stick	Yes ⁽³⁾	
Print Direct from a Computer	Yes, requires standard USB cable or Wi-Fi access point	Yes, requires standard USB cable
Print Direct from a Camera Phone	Yes, via Wi-Fi from iOS and Android mobile devices ⁽²⁾	
Accessories	CP Printer Carrying Case DCC-CP2 Postcard Size paper cassette PCP-CP400 Card Size paper cassette PCC-CP400 Dust Protection Cover DPC-CP100 Charger Adapter CG-CP200	
Software compatibility	Windows / Mac OS	
Battery Pack	NB-CP2L (up to 36 prints per charge) Requires optional Charge Adapter CG-CP200	
Dimensions (excluding protrusions)	178.0 x 127.0 x 60.5 mm	
Weight (excluding ink cartridge and paper cassette)	810g	810g

All data is based on Canon's standard testing methods. Subject to change without notice.

(1) Requires optional cassette. Please check the accessories field.

(2) Android devices will be supported after December 2012.

(3) Irregularly sized images, or images that have been edited on a computer may not display or print. USB Devices that are not identified as "Removable media" (such as external hard drives) or do not use the FAT or exFAT file system or have GUID partition tables created on a Macintosh computer are not supported.